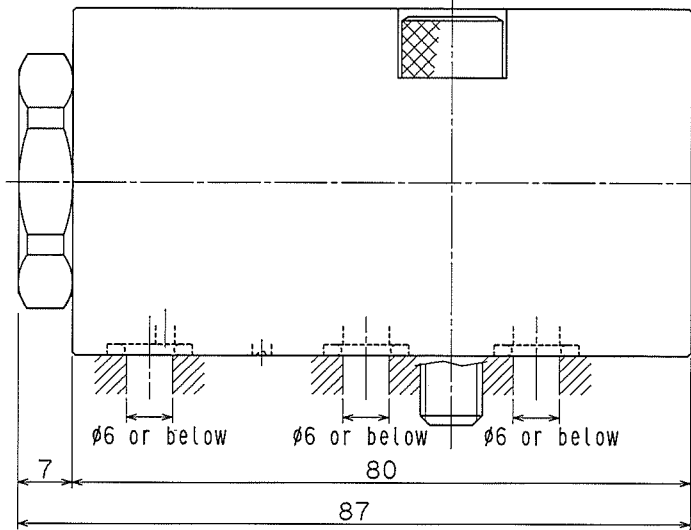


2- $\phi 9$ Bolt hole
Attached 2-M8X45 Bolt

31

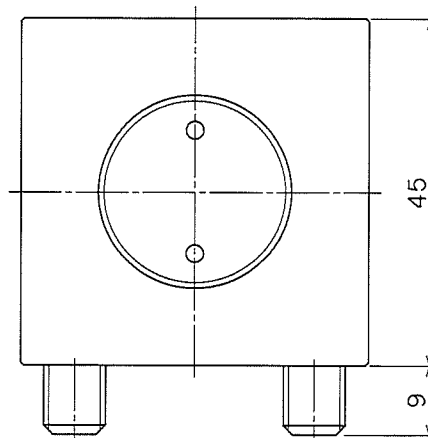


$\phi 6$ or below

$\phi 6$ or below

$\phi 6$ or below

87



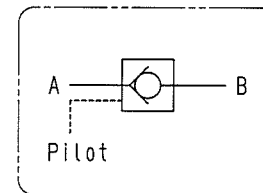
Specifications

Model	BY0631-L	BY0631-T		
Operating pressure (MPa)	1.0~7.0	7.0~25.0		
Design pressure (MPa)	10.5	37.5		
Operating temperature	0~70°C			
Fluid to be used	General hydraulic oil equivalent to ISO-VG-32			
Minimum passage area (mm ²)	28.3			
Pilot hydraulic pressure	Operating Pressure	7.0MPa	2.0 MPa or over	2.0 MPa or over
		25.0MPa	—	7.0 MPa or over

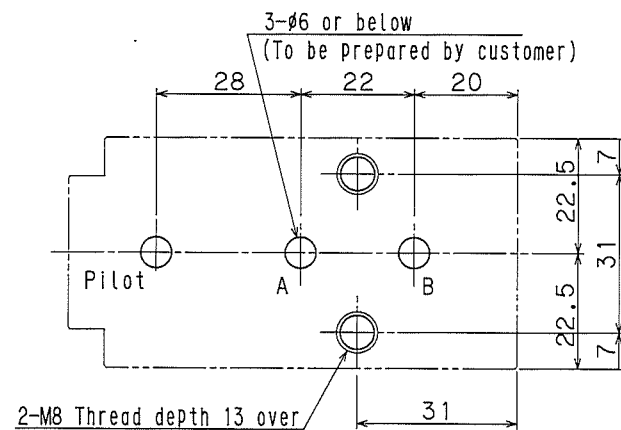
Notes

Please connect primary pressure side to A port and connect secondary pressure side to B port respectively.

Circuit Symbols



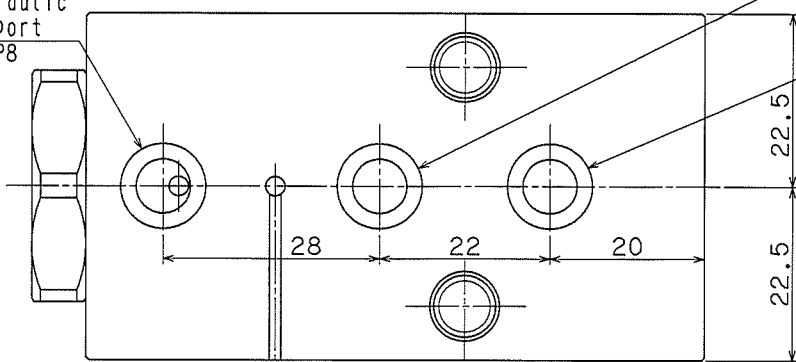
Mounting Dimensional Drawing



3- $\phi 6$ or below
(To be prepared by customer)

Pilot hydraulic pressure port
O-ring:1BP8

Attached



Free flow entrance
A port

O-ring:1BP8 Attached

Free flow exit
B port

O-ring:1BP8 Attached

Remarks) Regarding the relative roughness of valve mounting surface, make it 6.3S.

CAREER	SCALE	10/04/27	10/04/27	NAME	BY0631-□
RT	11.06.20 S.K.L.A.	3/2	A.ArIseto S.Kuroda	NON-LEAK PILOT CHECK VALVE	
KOSMEK				DWG. NO	3B09236-E0